

# MONTHLY MEMBERSHIP PROGRESS REPORT

LOCATION PHILIPPINES

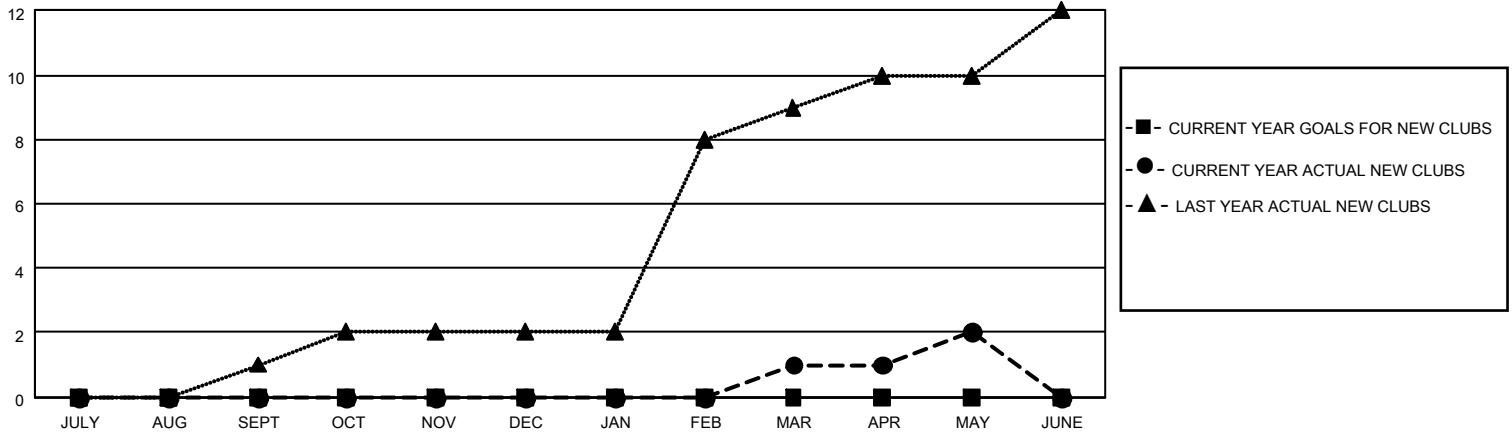
District 301 E

Results as of: 5/31/2023

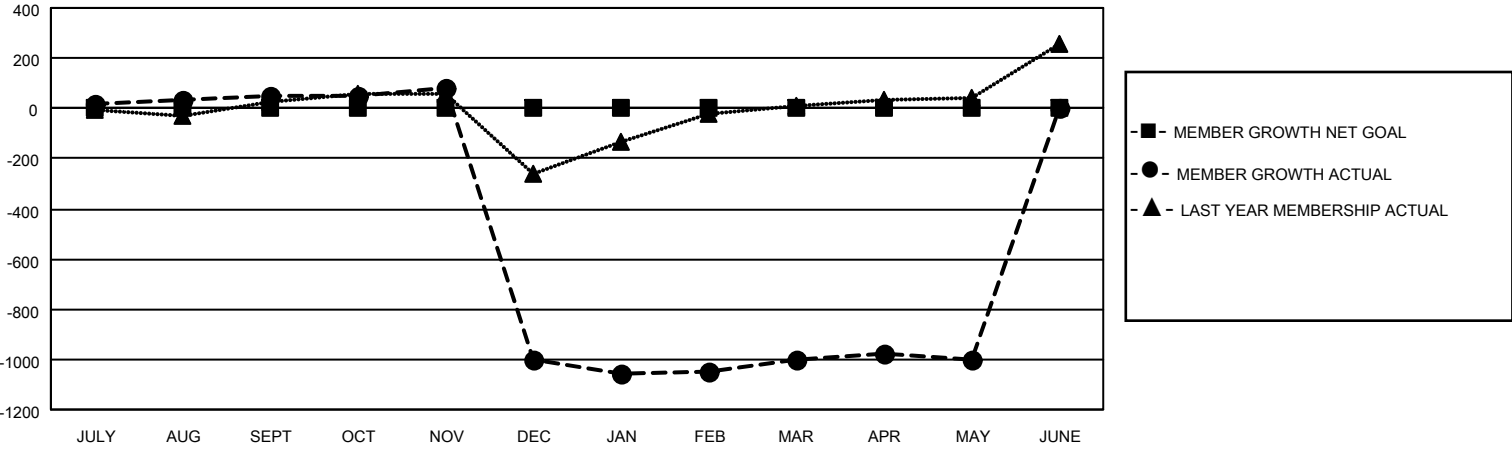
Clubs			
RESULTS FOR 2022-2023			
QUARTER	NEW CLUB GOAL	NEW CLUBS	DROPPED CLUBS
JULY/AUG/SEPT	0	0	0
OCT/NOV/DEC	0	0	24
JAN/FEB/MAR	0	1	3
APR/MAY/JUNE	0	1	0

Members			
RESULTS FOR 2022-2023			
QUARTER	MEMBER GROWTH NET GOAL	MEMBER GROWTH ACTUAL	DROPPED MEMBERS ACTUAL (including transfers)
JULY/AUG/SEPT	0	134	68
OCT/NOV/DEC	0	56	1,107
JAN/FEB/MAR	0	296	149
APR/MAY/JUNE	0	94	56

**GOALS AND ACTUAL NEW CLUBS CUMULATIVE**



**GOALS AND ACTUAL MEMBERS CUMULATIVE**



**DROPPED CLUBS: 27**

**34 CLUBS OF 73 ADDED 1 OR MORE NEW MEMBERS**

**GENDER DISTRIBUTION**

MALE	1,098 (53.43%)
FEMALE	958 (46.62%)
NON BINARY	0 (0.00%)
PREFER NOT TO ANSWER	-1 (-0.05%)

**DROPPED MEMBERS**

[CLICK HERE FOR CUMULATIVE MEMBERSHIP DATA](#)

DECEASED	9
CLUB CANCELLED	1,137
OTHER	234
<b>TOTAL</b>	<b>1,380</b>

TOTAL FAMILY UNIT MEMBERS 876

FAMILY MEMBERS PAYING HALF DUES 506